

WEBINAR:

Social Commitment and Community Engagement in Higher Education in Latin America and Europe: Sharing Experiences and Institutional Self-Reflection Frameworks

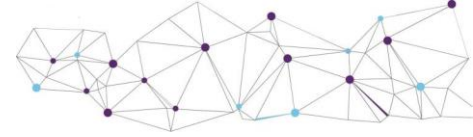
21st of September 2021

9.30am (CDT) - 4.30pm (CEST)



**The event will be held in Spanish and English with simultaneous translation into both languages*

Limited places available. Register here: <https://bit.ly/3yVn9s0>



PROGRAMME

- **Introduction to the webinar (5')** by Josep M. Vilalta, director of the Global University Network for Innovation (GUNI)
- **Welcome Words (5')** by Hugo Casanova, director of the Institute for Research on the University and Education (IISUE-UNAM)
- **Social Commitment and Community Engagement in Higher Education in Latin America and the Caribbean (10')** by Axel Didriksson, president of GUNI for Latin America and the Caribbean (GUNI-ALC)
- **Towards a New Framework for Community Engagement in Higher Education: the TEFCE Toolbox for Institutional Self-Reflection (20')** by Thomas Farnell, coordinator of the TEFCE project, Institute for the Development of Education (IDE)
- **The TEFCE Toolbox at the University of Girona (15')** by Silvia Llach, vicerector for Territory and Social Commitment, University of Girona
- **Good Practices from Latin America and the Caribbean (30')**
Marcelo Knobel, former rector of the University of Campinas, Brazil
María Magdalena Serrate, Director of the Service-Learning Programme of the Directora del Programa de Aprendizaje-Servicio del Latin American Pact for Education with Human Quality (PALECH)
Freddy Álvarez, former rector of the National University of Education of Ecuador (UNAE)
- **Open debate (20')**
Moderation: Axel Didriksson (GUNI-ALC) and Victoria Gómez (GUNI)